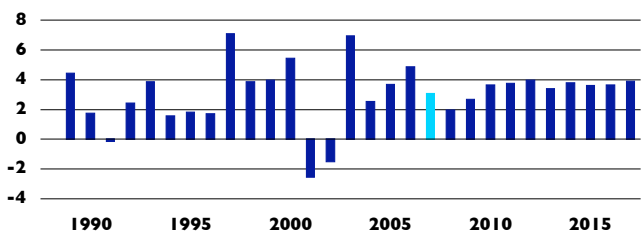


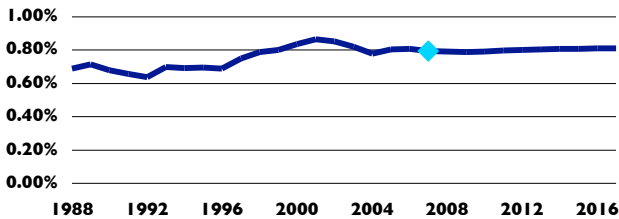
TOTAL DEMAND

Caribbean Travel & Tourism is expected to generate US\$56.1 bn of economic activity (Total Demand) in 2007, growing (nominal terms) to US\$107.3 bn by 2017. Total Demand is expected to grow by 3.0% in 2007 and by 3.3% per annum, in real terms, between 2008 and 2017. 2007 Total Demand represents 0.8% of world market share.

GROWTH 2007: 3.0% 10Yr: 3.3%



WORLD MARKET SHARE: 0.8%



Caribbean Travel & Tourism market share of worldwide Total Demand is generally increasing.

WORLD RANKING (13 Regions)

- 13** ABSOLUTE size
- 1** RELATIVE contribution to regional economy
- 11** GROWTH forecast

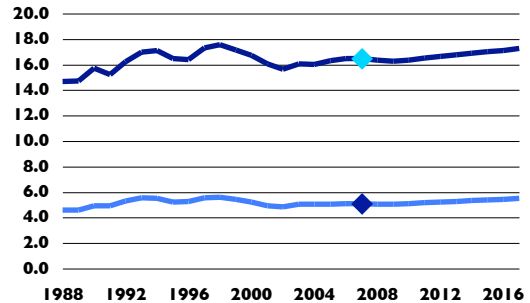
GDP

T&T Industry: 5.1% **T&T Economy: 16.5%**

The Caribbean's T&T Industry is expected to contribute 5.1% to Gross Domestic Product (GDP) in 2007 (US\$12.5 bn), rising in nominal terms to US\$24.7 bn (5.5% of total) by 2017. The T&T Economy contribution (percent of total) should rise from 16.5% (US\$40.3 bn) to 17.3% (US\$77.2 bn) in this same period.

Caribbean Travel & Tourism Industry GDP contribution to Total GDP is generally increasing, and Travel & Tourism Economy GDP contribution to Total GDP is generally increasing.

Caribbean Travel & Tourism Gross Domestic Product (% of Total GDP)



Light Blue Line is T&T Industry GDP; Dark Blue Line is T&T Economy GDP

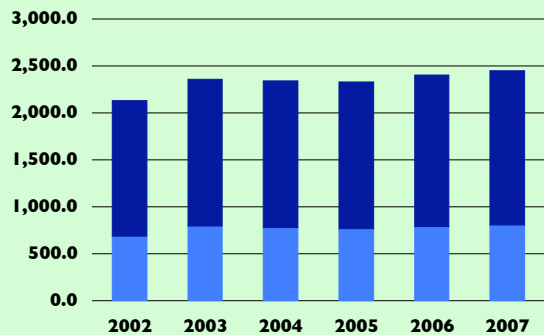
JOBS

T&T Industry: 806,447 **T&T Economy: 2,447,257**

Caribbean T&T Economy employment is estimated at 2,447,000 jobs in 2007, 14.8% of total employment, or 1 in every 6.7 jobs. By 2017, this should total 3,074,000 jobs, 16.0% of total employment or 1 in every 6.3 jobs. The 806,000 T&T Industry jobs account for 4.9% of total employment in 2007 and are forecast to total 1,042,000 jobs or 5.4% of the total by 2017.

Caribbean relative Travel & Tourism Industry Employment contribution to Total Employment is generally increasing, and relative Travel & Tourism Economy Employment contribution to Total Employment is generally increasing.

Caribbean Travel & Tourism Employment ('000s of Jobs)



Light Blue Bar is T&T Industry Jobs; Light/Dark Blue Combination is T&T Economy Jobs